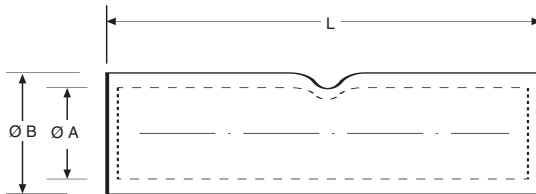


# MANGUITOS DE TUBO DE COBRE

CONEXIONES ELECTRICAS, S.A.



**Copper Joints (Muffs)**  
Manchons de cuivre



**Material:**  
**SFCU S/DIN 1787-73**  
**Hasta M9-11**  
**Resto: SECU S/ DIN 1787-73**  
**ESTAÑADO TINNED ETAMÉ**

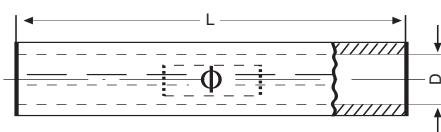
| CABLE |       | Ø    | Ø    | L  | HERRAMIENTA<br>Tool / Outil | REF.     | CABLE |       | Ø    | Ø    | L        | HERRAMIENTA<br>Tool / Outil | REF.       |
|-------|-------|------|------|----|-----------------------------|----------|-------|-------|------|------|----------|-----------------------------|------------|
| Norm. | Flex. | A    | C    |    |                             |          | Norm. | Flex. | A    | C    |          |                             |            |
| 1,5   | 1     | 1,5  | 3    | 15 | A6, TP3                     | M1,5 - 3 | 63    | 50    | 11,5 | 14   | 48       | T95, T150, PHC              | M11 - 14   |
| 2,5   | 1,5   | 2,5  | 4    | 15 |                             | M2,5 - 4 | 80    | 63    | 12   | 15   | 50       |                             | M12 - 15   |
| 4     | 2,5   | 3    | 5    | 22 |                             | M3 - 5   | 95    | 70    | 13,5 | 16,5 | 52       |                             | M13 - 16   |
| 6     | 4     | 4    | 6    | 22 |                             | M4 - 6   | 120   | 95    | 15,5 | 19   | 62       | T150, PHC, HMS              | M15,5 - 19 |
| 10    | 6     | 5    | 7    | 28 | T50, TP3                    | M5 - 7   | 150   | 120   | 17   | 21   | 66       |                             | M17 - 21   |
| 16    | 10    | 6    | 8    | 31 | T50, TP5                    | M6 - 8   | 185   | 150   | 19   | 23   | 75       |                             | M19 - 23   |
| 25    | 16    | 7    | 9    | 32 | T50, T95                    | M7 - 9   | 240   | 185   | 21   | 25,5 | 80       |                             | M21 - 25,5 |
| 35    | 25    | 8    | 10   | 34 |                             | M8 - 10  | 300   | 240   | 23   | 28   | 94       | PHC, PHH                    | M23 - 28   |
| 40    | 35    | 9    | 11   | 40 |                             | M9 - 11  | 400   | 300   | 27   | 33   | 110      |                             | M27 - 33   |
| 50    | 35    | 10,2 | 12,7 | 45 |                             | M10 - 13 | 500   | 400   | 30   | 36   | 130      | PHP, U20                    | M30 - 36   |
|       |       |      |      |    |                             | 600      | 500   | 34    | 40   | 150  | M34 - 40 |                             |            |

# MANGUITOS DE COBRE Y ALUMINIO, APRIETE HEXAGONAL

CONEXIONES ELECTRICAS, S.A.



Copper and aluminium muffs (Ferrules) for hexagonal pressing  
Manchons en cuivre et aluminium sertissage hexagonal



Material:  
E-Cu DIN 1787-73  
Al 99,5

PIEZAS DE DIMENSIONAMIENTO CENTRO EUROPEO  
Central Europe Dimensions

| CABLE<br>mm <sup>2</sup> | L   | Ø D  | MATRIZ<br>HEXAGONAL<br>Die size | NÚMERO DE APRIETES<br>Number of crimps |           | REF.    |
|--------------------------|-----|------|---------------------------------|--|-----------|---------|
|                          |     |      |                                 | TENAZA<br>Handtool                     | Hydraulic |         |
| CU 6                     | 30  | 3,8  | 6                               | 1 - 1                                  |           | GMC 6   |
| 10                       | 30  | 4,5  | 6                               | 1 - 1                                  |           | GMC 10  |
| 16                       | 50  | 5,5  | 8                               | 2 - 2                                  |           | GMC 16  |
| 25                       | 50  | 7    | 10                              | 2 - 2                                  |           | GMC 25  |
| 35                       | 50  | 8,2  | 12                              | 2 - 2                                  |           | GMC 35  |
| 50                       | 55  | 10   | 14                              | 3 - 3                                  |           | GMC 50  |
| 70                       | 55  | 11,5 | 16                              | 3 - 3                                  |           | GMC 70  |
| 95                       | 70  | 13,5 | 18                              | 4 - 4                                  | 2 - 2     | GMC 95  |
| 120                      | 70  | 15   | 20                              | 4 - 4                                  | 2 - 2     | GMC 120 |
| 150                      | 80  | 17   | 22                              | 5 - 5                                  | 2 - 2     | GMC 150 |
| 185                      | 85  | 19   | 25                              | 5 - 5                                  | 2 - 2     | GMC 185 |
| 240                      | 90  | 21,5 | 28                              |  | 2 - 2     | GMC 240 |
| 300                      | 100 | 24   | 32                              |  | 2 - 2     | GMC 300 |
| ALU 25                   | 70  | 6,8  | 12                              | 4 - 4                                  |           | GMA 25  |
| 35                       | 85  | 8    | 14                              | 5 - 5                                  |           | GMA 35  |
| 50                       | 85  | 10   | 16                              | 5 - 5                                  | 3 - 3     | GMA 50  |
| 70                       | 105 | 11,5 | 18                              | 6 - 6                                  | 3 - 3     | GMA 70  |
| 95                       | 105 | 13,5 | 22                              | 6 - 6                                  | 3 - 3     | GMA 95  |
| 120                      | 105 | 15   | 22                              | 6 - 6                                  | 3 - 3     | GMA 120 |
| 150                      | 125 | 16,5 | 25                              | 7 - 7                                  | 3 - 3     | GMA 150 |
| 185                      | 125 | 18,5 | 28                              | 7 - 7                                  | 3 - 3     | GMA 185 |
| 240                      | 145 | 21,5 | 32                              |  | 3 - 3     | GMA 240 |
| 300                      | 145 | 24,5 | 34                              |  | 3 - 3     | GMA 300 |

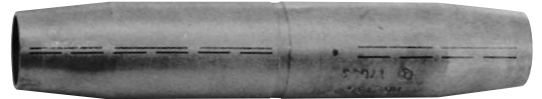
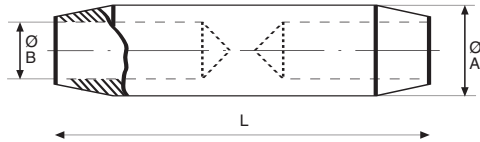
# MANGUITO COBRE MEDIA TENSION

CONEXIONES ELECTRICAS, S.A.



Apriete hexagonal

Splice joint for copper cables / Hexagonal crimping  
Manchon de cuivre moyenne tension / Sertissage hexagonal



**Material:**  
**CUETP S/UNE 37150-86**  
**PASIVADO-UNCOATED**

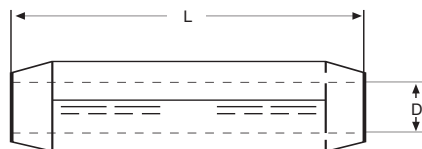
| CABLE<br>mm <sup>2</sup> | DIMENSIONES / Dimensions |      |     | HERRAMIENTA<br>Tool / Outil | REF.      |
|--------------------------|--------------------------|------|-----|-----------------------------|-----------|
|                          | Ø A                      | Ø B  | L   |                             |           |
| 25                       | 12,2                     | 7    | 65  | PHC - PHH                   | MMC - 25  |
| 35                       | 12,2                     | 8    | 65  |                             | MMC - 35  |
| 50                       | 12,2                     | 9,5  | 65  |                             | MMC - 50  |
| 70                       | 21                       | 11   | 100 |                             | MMC - 70  |
| 95                       | 21                       | 13   | 100 |                             | MMC - 95  |
| 120                      | 21                       | 14,5 | 100 |                             | MMC - 120 |
| 150                      | 21                       | 16   | 100 |                             | MMC - 150 |
| 185                      | 26,2                     | 18   | 140 |                             | MMC - 185 |
| 240                      | 26,2                     | 20   | 140 |                             | MMC - 240 |

# MANGUITOS DE COBRE Y ALUMINIO, APRIETE HEXAGONAL 10-30 kV

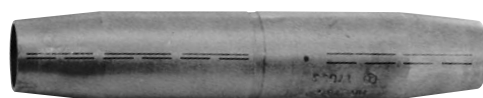
CONEXIONES ELECTRICAS, S.A.



Copper and aluminium muffs (Ferrules) Medium Voltage 10-30 kV for hexagonal pressing  
Manchons en cuivre et aluminium sertissage hexagonal



Material:  
E-Cu  
Al 99,5



PIEZAS DE DIMENSIONAMIENTO CENTRO EUROPEO  
Central Europe Dimensions

| CABLE<br>mm <sup>2</sup> | L   | Ø D  | MATRIZ<br>HEXAGONAL<br>Die size | NÚMERO DE APRIETES<br>Number of crimps |           | REF.     |
|--------------------------|-----|------|---------------------------------|--|-----------|----------|
|                          |     |      |                                 | TENAZA<br>Handtool                     | Hydraulic |          |
| CU 25                    | 55  | 7    | 10                              | 2 - 2                                  |           | GMMC 25  |
| 35                       | 55  | 8,2  | 12                              | 2 - 2                                  |           | GMMC 35  |
| 50                       | 70  | 10   | 14                              | 3 - 3                                  | 1 - 1     | GMMC 50  |
| 70                       | 70  | 11,5 | 16                              | 3 - 3                                  | 1 - 1     | GMMC 70  |
| 95                       | 95  | 13,5 | 18                              | 4 - 4                                  | 2 - 2     | GMMC 95  |
| 120                      | 95  | 15,5 | 20                              |  | 2 - 2     | GMMC 120 |
| 150                      | 110 | 17   | 22                              |  | 2 - 2     | GMMC 150 |
| 185                      | 110 | 19   | 25                              |  | 2 - 2     | GMMC 185 |
| 240                      | 115 | 21,5 | 28                              |  | 2 - 2     | GMMC 240 |
| 300                      | 120 | 24   | 32                              |  | 2 - 2     | GMMC 300 |
| ALU 35                   | 95  | 8    | 14                              | 4 - 4                                  |           | GMMA 35  |
| 50                       | 95  | 10   | 16                              | 4 - 4                                  | 2 - 2     | GMMA 50  |
| 70                       | 100 | 11,5 | 18                              | 4 - 4                                  | 2 - 2     | GMMA 70  |
| 95                       | 105 | 13,5 | 22                              | 4 - 4                                  | 2 - 2     | GMMA 95  |
| 120                      | 110 | 15   | 22                              | 4 - 4                                  | 2 - 2     | GMMA 120 |
| 150                      | 110 | 16,5 | 25                              |  | 2 - 2     | GMMA 150 |
| 185                      | 130 | 18,5 | 28                              |  | 2 - 2     | GMMA 185 |
| 240                      | 130 | 21   | 32                              |  | 2 - 2     | GMMA 240 |
| 300                      | 135 | 23,5 | 34                              |  | 2 - 2     | GMMA 300 |